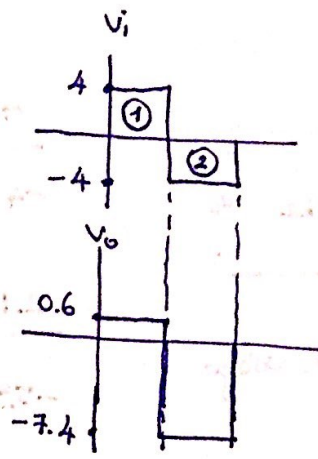
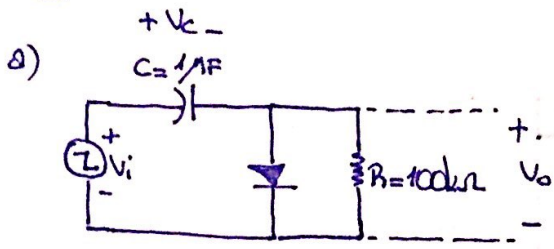
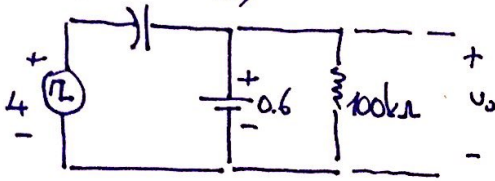


Part 2

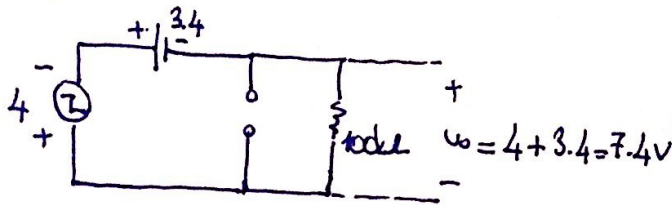


\* Diode is forward bias in cycle ①:

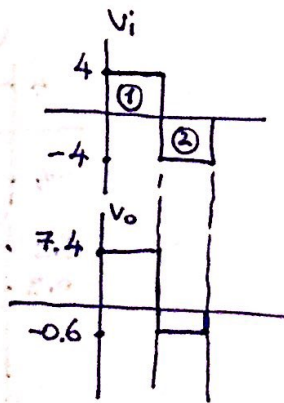
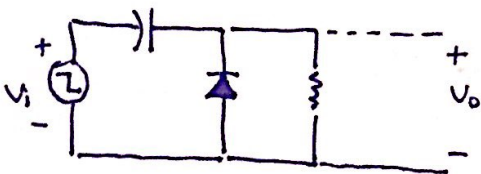
$$(4 - 0.6 = 3.4V)$$



\* cycle ②:

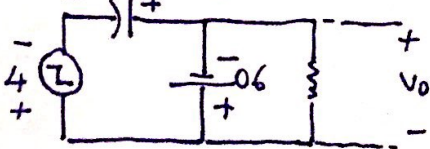


f) Reverse the diode

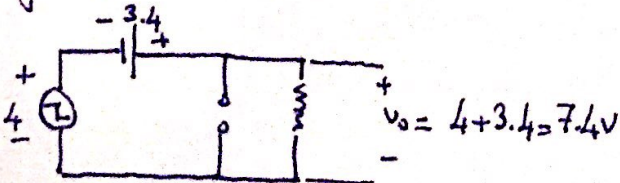


\* Diode is forward bias in cycle ②:

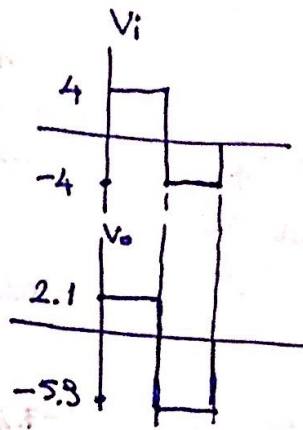
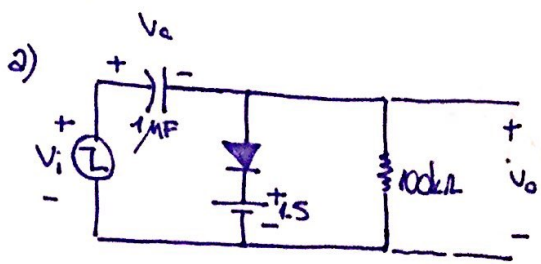
$$(4 - 0.6 = 3.4)$$



\* cycle ①:

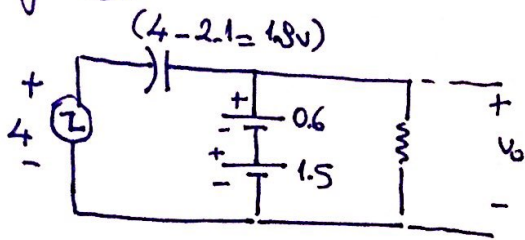


Part 3

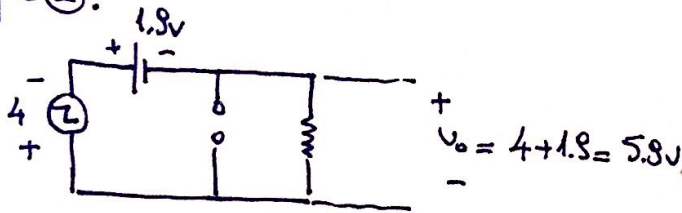


\* Remove ground for 1.5V DC voltage

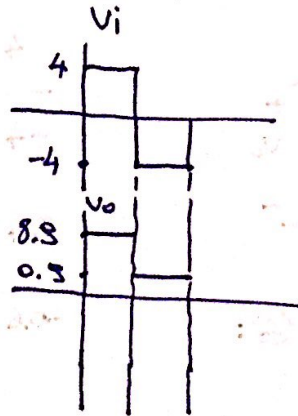
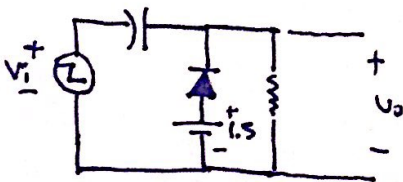
\* cycle ①:



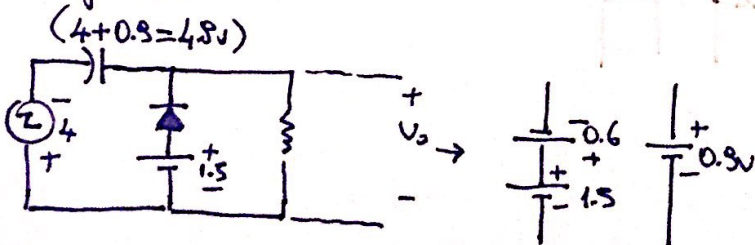
\* cycle ②:



f) Reverse the diode



\* cycle ②:



\* cycle ①:

